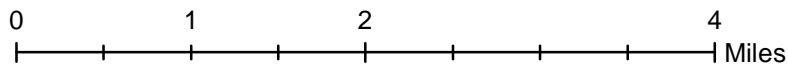
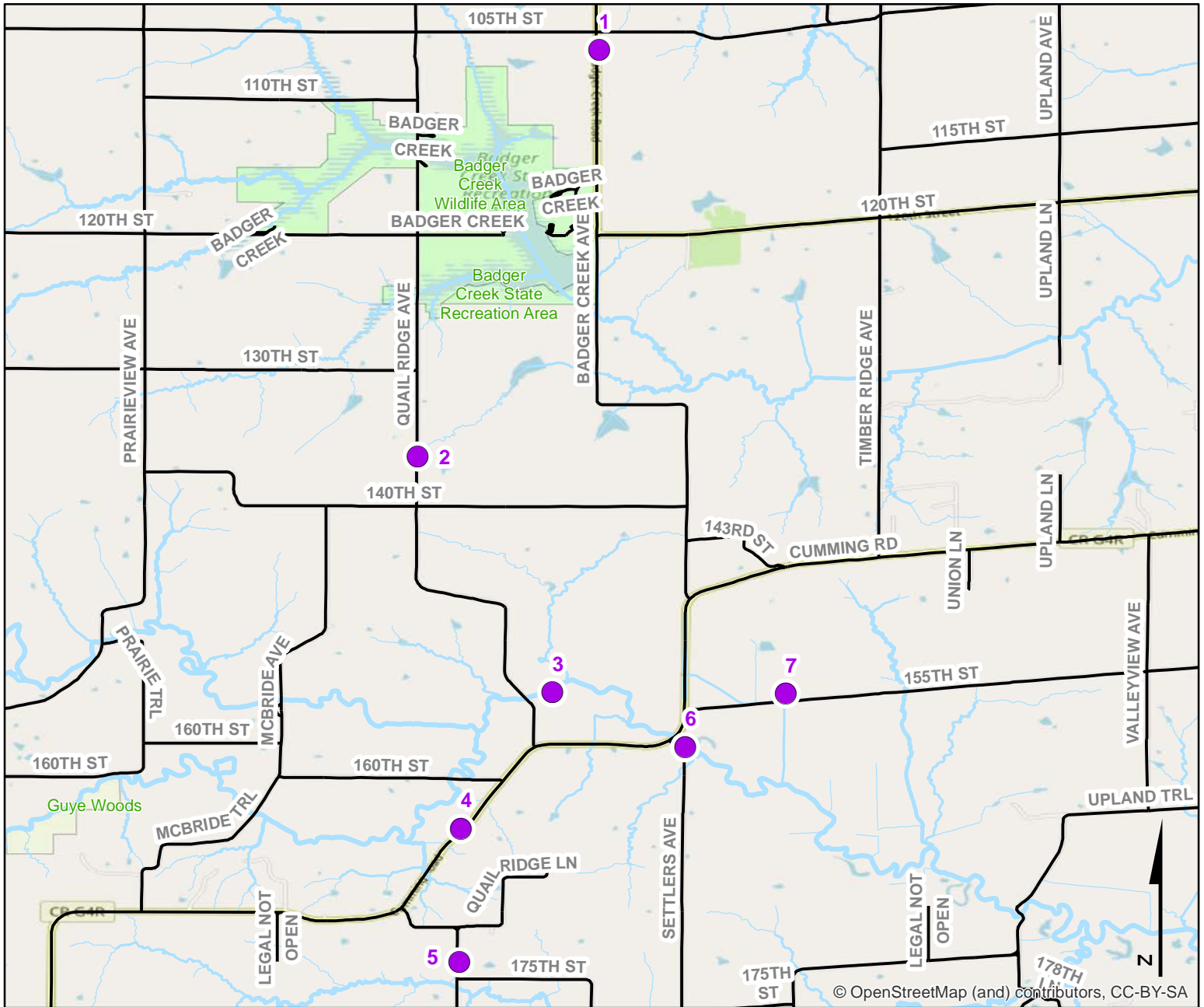


Volunteer Wildlife Monitoring Program (VWMP) Frog and Toad Survey

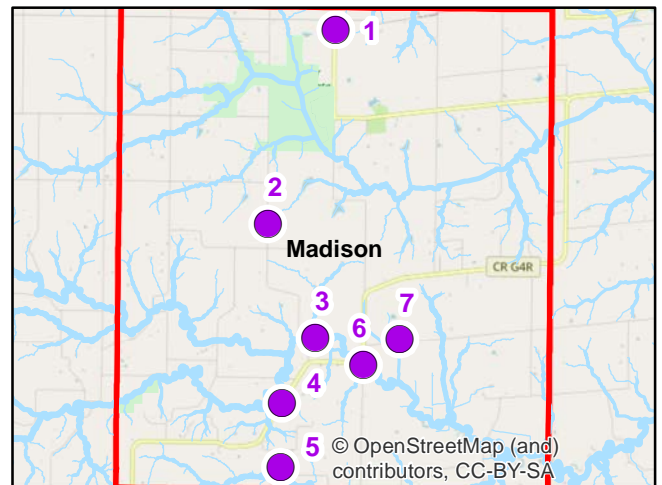


Route ID: 147 County: Madison



DNR
**Volunteer
 Wildlife
 Monitoring
 Program**

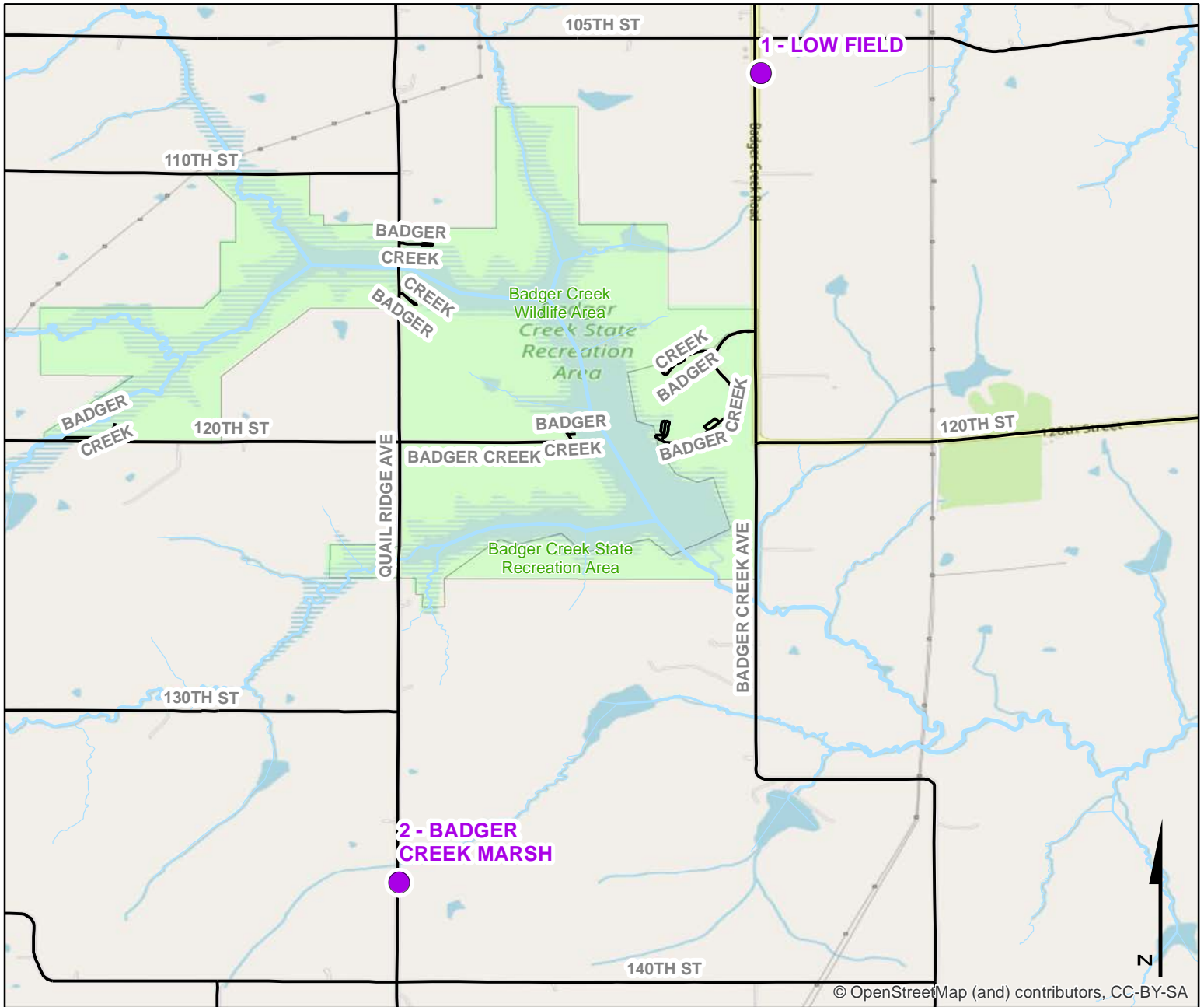
Legend



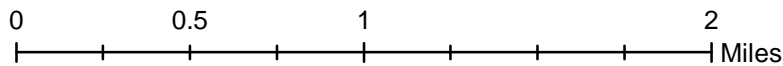
Volunteer Wildlife Monitoring Program (VWMP) Frog and Toad Survey



Route ID: 147 County: Madison

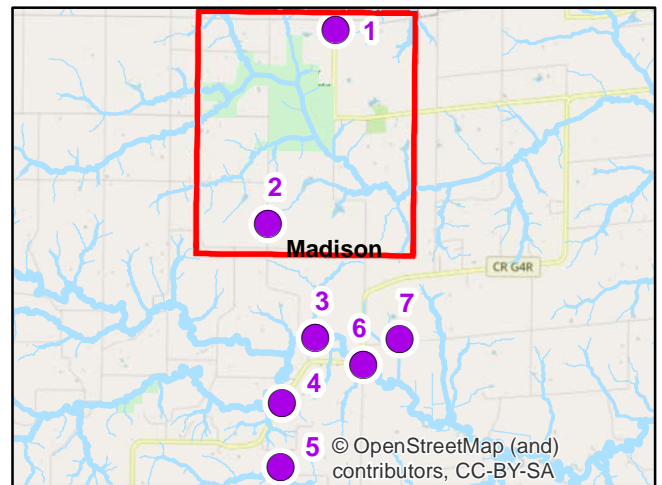


© OpenStreetMap (and) contributors, CC-BY-SA



Volunteer Wildlife Monitoring Program

Legend

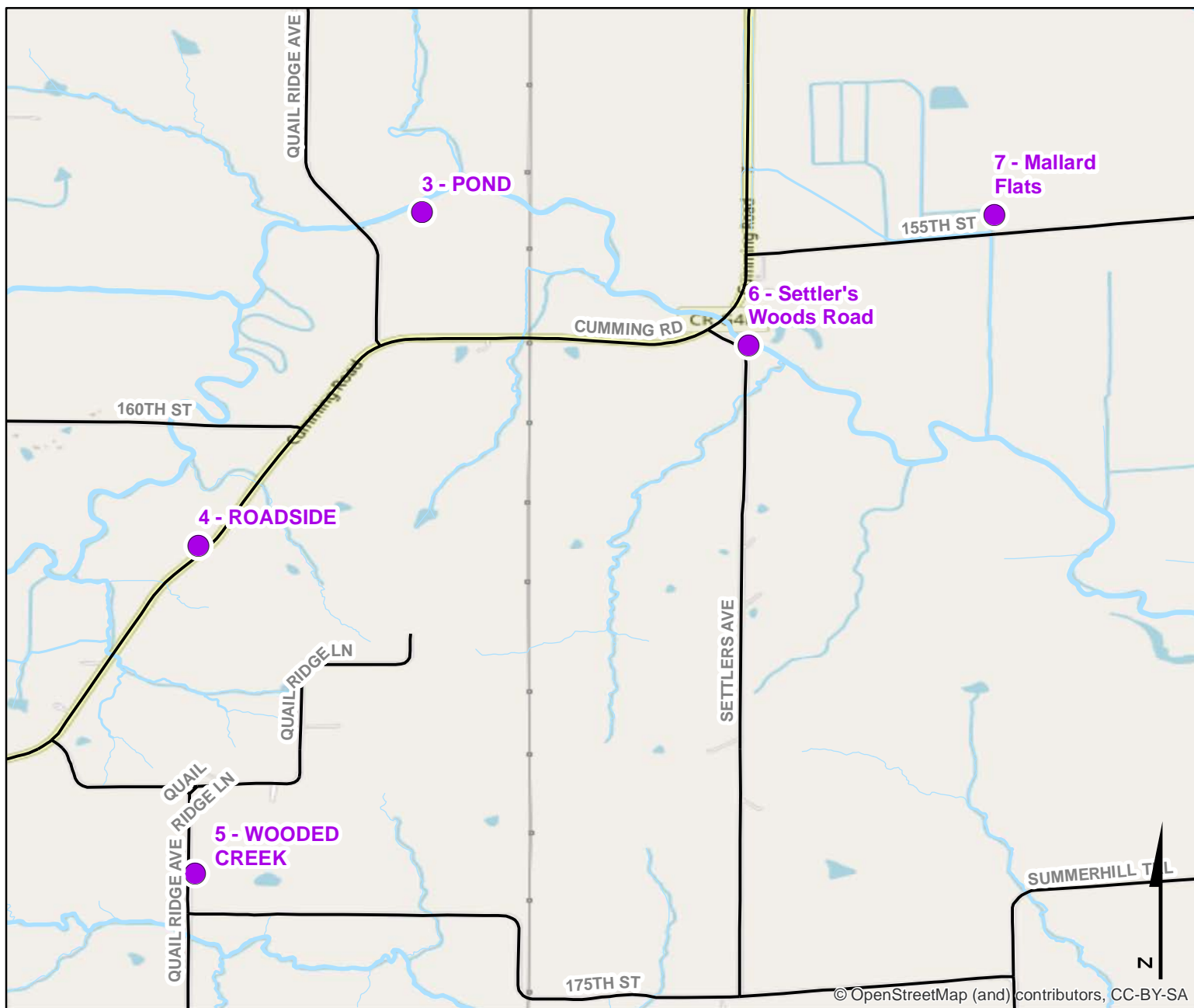


© OpenStreetMap (and) contributors, CC-BY-SA

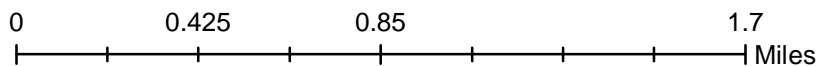
Volunteer Wildlife Monitoring Program (VWMP) Frog and Toad Survey



Route ID: 147 County: Madison

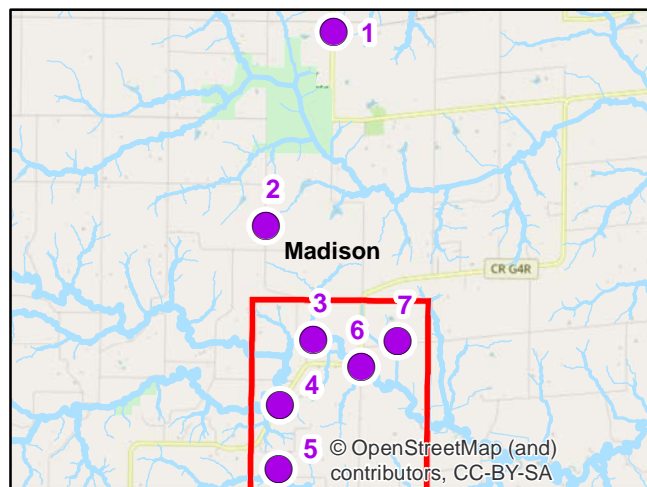


© OpenStreetMap (and) contributors, CC-BY-SA



DNR
**Volunteer
 Wildlife
 Monitoring
 Program**

Legend





Frog and Toad Call Survey Route Description

Route ID **147**

Established: 1994

Site Number	Name	County	Latitude	Longitude	Directions
1	LOW FIELD	Madison	41.4939055	-93.9062546	
2	BADGER CREEK MARSH	Madison	41.4506106	-93.9256212	
3	POND	Madison	41.4254504	-93.9112708	
4	ROADSIDE	Madison	41.4109476	-93.9209869	
5	WOODED CREEK	Madison	41.3967258	-93.921148	
6	Settler's Woods Road	Madison	41.4196574	-93.8970964	Woods surrounding the North River on the eastside of Settlers Ave, south of intersection with G4R
7	Mallard Flats	Madison	41.4253429	-93.8864039	Wetlands on both sides of 155th St just east from intersection with G4R